

Registering WashU 2FA on a Wifi device with no phone number

Two-Factor Authentication (2FA) is used to access a multitude WUSTL Key enabled services such as one.wustl.edu. This means that when accessing the service, you will need to log in with your WUSTL Key and then verify it's you via the Duo Mobile App on your Duo-registered device.

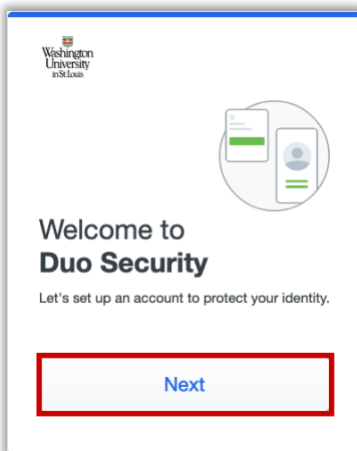
If the device does not have an active phone number assigned to it by a service provider, it must be able to connect to the internet to both download the Duo Mobile app and to receive authentication notifications.

Follow the steps below to register for WashU 2FA

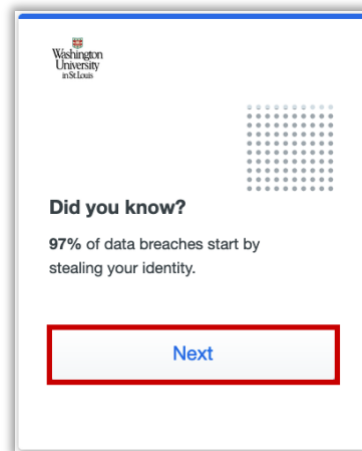
1. From a browser, navigate to the [WashU 2FA enrollment wizard](#) and select the **Manage Enrollment** button.

Manage Enrollment

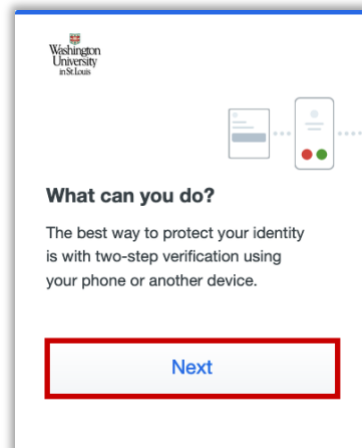
2. The Welcome to Duo Security window will show, select **Next**.



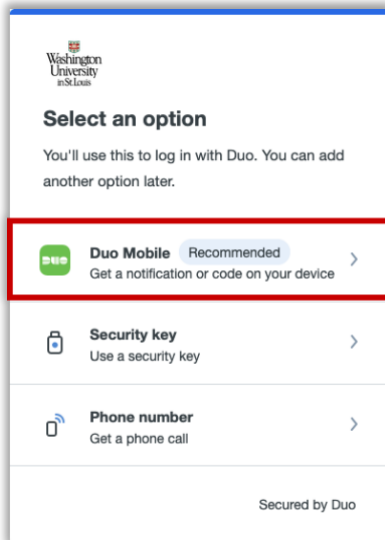
3. The 'Did you know?' window will show, select **Next**.



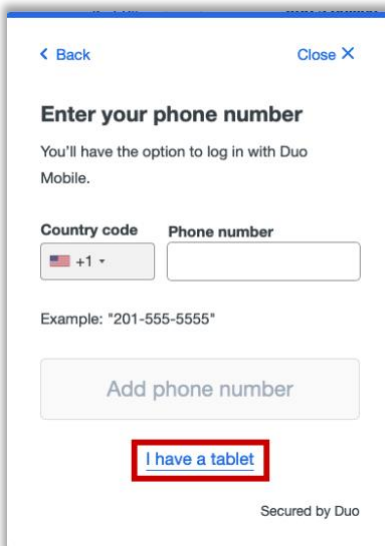
4. The 'What can you do?' window will show, select **Next**.



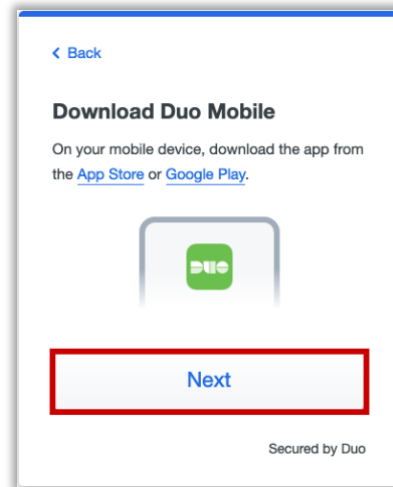
5. The 'Select an Option' window will show, select **Duo Mobile**.



6. The 'Enter your phone number' window will show, select **I have a tablet**.

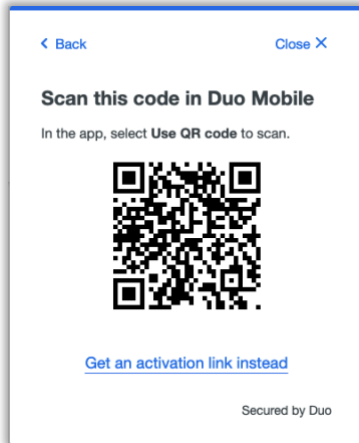


7. On the device, download Duo Mobile from the App Store or Google Play, then select **Next**.



8. The following instructions may vary per device.
- a. **The Apple steps should be similar (but may vary) to the following:**
- On the 'Duo Mobile would like to send you notifications' window, be sure to **Allow** notifications so that you can get the on-screen and/or audio notification when being prompted to complete an authentication. You may adjust these later in the device Settings under Notifications. [Apple Notification Settings](#).
 - On the 'Accounts' window, tap the **Add** (or plus icon) to add a new account.
 - On the 'Add account' window, tap **Use QR code**.
 - A request to use the camera may pop up, tap **OK**.

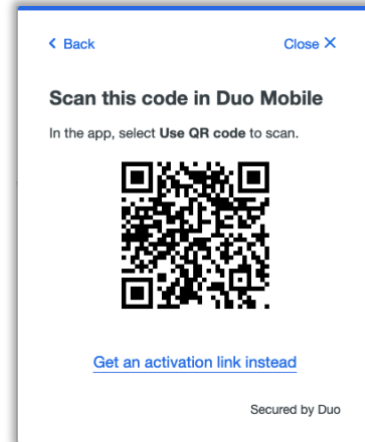
- iv. When the camera window appears, point the camera at the QR code on the computer screen. This will send the WUSTL information to your phone.



- v. On the 'Organization' window, the default account name is WUSTL Key. You may rename it or leave it as is then tap **Save**.
 - vi. On the 'Account Linked' screen, you may tap **practice now**, to experience some examples, or **Skip**.
- b. **The Android steps should be similar (but may vary) to the following:**

- i. On the 'Welcome' window, tap **Set up account**.
 - ii. On the 'Link your account' window, tap **Use a QR code**.
 - iii. When the camera opens, point it at the QR code on the computer screen. This should automatically send the WUSTL information to the device.
1. **Note:** if a notification pops up asking for permission to use the camera, tap **OK** or

Allow.



- iv. On the 'Name your account to continue' window, tap **Next**.
 - v. On the 'Name Account' window, the default account name is WUSTL Key. You may rename it or leave it as is then tap **Save**.
 - vi. On the 'Account Linked' screen, you may tap **practice now**, to experience some examples, or **Skip**.
 - vii. **Note:** Be sure to visit your device settings to allow notifications from Duo Mobile. [Android Notification Instructions](#)
9. Your WashU 2FA set up is now complete.