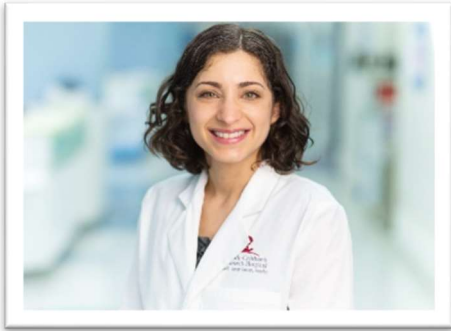




| IS-2 Summer Institute

| Scholar Attendee Bios



Asya Agulnik, MD, MPH

Associate Faculty Member
Department of Global Pediatric Medicine
Division of Critical Care
St. Jude Children's Research Hospital

Asya Agulnik, MD, MPH, is an Associate Member in the Department of Global Pediatric Medicine and the Division of Critical Care. She received her undergraduate degree in Biology from Harvard College, MD from the Stanford University School of Medicine, and Master of Public Health from the University of California, Berkley. She completed residency in Pediatrics and fellowship in Pediatric Critical Care at Boston Children's Hospital.

Dr. Agulnik joined the faculty at St. Jude in 2016 as a pediatric intensivist and a global health researcher focused on strategies to improve hospital care for children with cancer who develop critical illness in high-resource and resource-limited settings. Dr. Agulnik is the Director of the Global Critical Care and Eurasian Regional Programs at St. Jude Global, which aims to reduce disparities in outcomes for children with cancer worldwide. Dr. Agulnik's research focuses on the implementation of Pediatric Early Warning Systems (PEWS) to improve early identification of critical illness in hospitalized pediatric oncology patients. She leads a multicenter quality improvement collaborative to implement PEWS (Proyecto EVAT) in 60 pediatric oncology centers in Latin America. Dr. Agulnik also contributes to global education in pediatric onco-critical care, including developing the St. Jude Global Academy in Pediatric Onco-Critical Care and founding of the annual Pediatric Onco-Critical Care Symposium (POCCS) at St. Jude. In Eurasia, Dr. Agulnik leads efforts to improve health systems, education, research, and hospital care for children with cancer, including research on physician perspectives on integration of palliative care into childhood cancer care.



Daniel Amante, PhD, MPH

Assistant Professor
Department of Population and Quantitative Health
Sciences
Division of Health Informatics and Implementation
Science
UMass Chan Medical School

My research is focused on enhancing implementation of evidence-based diabetes care services using health information technologies (HIT) and behavior change approaches influenced by the field of behavioral economics (BE). In my developing research program, I focus on utilizing increasingly prevalent Electronic Health Record tools to identify patients in our healthcare system in need of additional support and enhanced diabetes care services. I then aim to leverage patient-facing HIT to increase patient access to support and BE-inspired behavior change approaches to improve patient decision-making and engagement with recommended diabetes care services. In my first year as faculty, I was awarded a clinical innovation project funded by the UMass Medical Diabetes Center of Excellence to build an Epic Reporting Workbench to identify patients with gaps in recommended diabetes care and a computer-assisted telephone interview program to conduct proactive outreach and “nudge” patients towards available resources. We found that the resource patients were most interested in was attending diabetes self-management training (DSMT) at our diabetes center. As part of my ongoing KL2 project, I recruited a Patient Research Expert Panel and deployed a user-centered design approach to develop the DM-BOOST intervention. The goals of DM-BOOST are to enhance patient engagement and experience with DSMT by using proactive recruitment methods, peer-written text messages with diabetes self-management tips and goal-setting nudges, and a telehealth training component. My future goals are to culturally-adapt DM-BOOST for Spanish-speaking Latinx patients and evaluate the impact of implementing DM-BOOST to support both English and Spanish-speaking patients with type 2 diabetes.



Adjoa Anyane-Yebova , MD, MPH

Assistant Professor
Division of Gastroenterology
Massachusetts General Hospital
Harvard Medical School

Adjoa Anyane-Yebova, MD, MPH, is an Assistant Professor in the CTEU, an attending gastroenterologist at MGH and Instructor of Medicine at HMS. Her research interests include gastrointestinal disorders in minority populations with a particular interest in inflammatory bowel disease, and colorectal cancer screening in underserved communities. Her work is centered around health equity with the goal of advancing care, improving access, and eliminating disparities for vulnerable patient populations. Dr. Anyane-Yebova treats patients with general gastrointestinal disorders and inflammatory bowel disease. Dr. Anyane-Yebova received her MD from the University of Cincinnati College of Medicine, completed her internal medicine residency and a chief residency at the University of Illinois at Chicago, and her gastroenterology fellowship where she also served as chief fellow at the University of Chicago. Prior to joining the faculty at MGH she completed the Commonwealth Fund Fellowship in Minority Health Policy at Harvard University and also received her MPH from the Harvard T.H. Chan School of Public Health.



Yuka Asada, PhD, RD

Clinical Assistant Professor
Community Health Sciences
School of Public Health
University of Illinois Chicago

I am a Clinical Assistant Professor and Registered Dietitian in Community Health Sciences at the School of Public Health, University of Illinois Chicago (UIC). I have advanced training in public health nutrition and qualitative research methods. For the last decade, my work has focused on policy and environmental approaches to promoting health and advancing health equity. I have pursued these goals through examination of school nutrition and wellness policies, early childcare nutrition support programs, sugary beverage taxes, and other public health and nutrition policies and programs. I have served as a co-principal investigator of two Robert Wood Johnson Foundation studies in related tracts: Healthy Eating Research and Equity-Focused Policy Research. Both studies aimed to advance health equity vis-à-vis implementation of federal nutrition support policies and programs that have the potential to impact population health. I'm also a dedicated educator teach in the Doctor of Public Health Leadership (DrPH) and Masters of Public Health (MPH) programs at UIC.



Jure Baloh, PhD, MHA

Assistant Professor of Health Policy and Management
Investigator and core Faculty
Center for Implementation Research
University of Arkansas for Medical Sciences

Jure Baloh, PhD, MHA, is an Assistant Professor of Health Policy and Management, and an Investigator and Core Faculty at the Center for Implementation Research, University of Arkansas for Medical Sciences in Little Rock, AR. He received his PhD in health services and policy from the University of Iowa and continued postdoctoral training in implementation science with Drs. Heather Reisinger (Iowa) and Geoff Curran (Arkansas) to develop expertise in formative evaluation for implementation. He is currently a CTSA KL2 scholar continuing his training in methods for developing and testing implementation strategies.

Overall, his research focuses on studying organizational structures, processes, and strategies that influence implementation of innovations in health services organizations to improve their performance and health outcomes. Utilizing qualitative and mixed methods, his projects focused on various innovations and settings, including Diabetes Prevention Programs (DPP) in rural Arkansas community health centers, TeamSTEPPS patient safety programs in Iowa Critical Access Hospitals, hand hygiene and PPE practices in large teaching hospitals, and an intensive referral program in substance use disorder (SUD) treatment organizations. His current work also includes pilot testing new delivery strategies (at home vs. clinic) for a new injectable HIV medication, and modification of a supervision strategy for SUD treatment programs.

The work Dr. Baloh plans to develop as an IS-2 scholar continues the work his team on DPP implementation in rural Arkansas, with the ultimate goal to use community-engaged research approaches to identify, develop, and test implementation strategies to improve DPP implementation outcomes and equity.



Derrecka Boykin, PhD

Clinical Psychologist and Core Investigator
Center for Innovations in Quality, Effectiveness
and Safety (IQuEST) and South Central Mental
Illness Research and Clinical Center (MIRECC)
Michael E. DeBakey VA Medical Center,
Houston, Texas

Assistant Professor (tenure-track)
Menninger Department of Psychiatry and
Behavioral Science
Baylor College of Medicine

Derrecka Boykin, Ph.D., is a clinical psychologist and core investigator at the Center for Innovations in Quality, Effectiveness and Safety (IQuEST) and South Central Mental Illness, Research, and Clinical Center (MIRECC) at Michael E. DeBakey VA Medical Center MEDVAMC in Houston, Texas. Dr. Boykin is also an assistant professor (tenure-track) in the Menninger Department of Psychiatry and Behavioral Science at Baylor College of Medicine. She received her doctorate in clinical psychology from Northern Illinois University in DeKalb, Illinois under the advisement of Holly Orcutt, Ph.D., and completed her pre-doctoral clinical internship at MEDVAMC. She completed an advanced fellowship in health services research at the South Central MIRECC where she gained foundational knowledge in implementation science, mixed quantitative-qualitative research designs, and health equity research.

Dr. Boykin's current research focuses on improving mental health care access for historically underserved subgroups, including women veterans, rural residents, communities of color, and survivors of sexual violence. Her ongoing studies leverage non-traditional approaches, such as brief intervention models, and stakeholder-engaged methods to maximize fit and delivery of evidence-based treatments to the specific needs of these populations. Recently, she was awarded a career development award through VA Health Services Research and Development Office that seeks to understand the current state of MISSION Act community-based mental health treatment for veterans with a history of military sexual trauma (MST) and develop a program that enhances the ability of community providers to serve these veterans, especially those living in rural communities.



Meagan Brown, PhD, MPH

Faculty Member and Associate Director, KP Social Needs Network for Evaluation and Translation
Kaiser Permanente Washington Health Research Institute (KPWHRI)
University of Washington

Meagan Brown, PhD, MPH, is a faculty member at Kaiser Permanente Washington Health Research Institute (KPWHRI) and the Associate Director of the KP Social Needs Network for Evaluation and Translation (SONNET). Dr. Brown's research focuses on addressing health disparities among vulnerable populations both domestically and abroad, and her interests include social and environmental determinants of health, implementation science, physical activity promotion, and healthy food access.

Prior to attending UW, Dr. Brown earned her MPH in Health Behavior from the University of North Carolina-Chapel Hill in 2014, where her Capstone project focused on developing a workplace health promotion program with low-wage workers at UNC. She also worked for FHI 360 evaluating the impact of international integrated development initiatives and disseminating best practices for adolescent sexual and reproductive health.



Gabriela Buccini, PhD, MSc, IBCLC

Assistant Professor
Department of Social & Behavioral Health
School of Public Health
University of Nevada, Las Vegas

Gabriela Buccini, Ph.D., MSc, IBCLC, is an Assistant Professor of Social and Behavioral Health at the UNLV School of Public Health. She is trained in Epidemiology, Public Health Nutrition, and Implementation Science. Her research experience spans the fields of maternal-child health and nutrition focusing on vulnerable populations in low-income settings locally and globally. Specifically, she applies community-based and mixed-methods research guided through the lens of Complex Adaptive Systems (CAS), the Socioecological Model, and the WHO Nurturing Care framework to investigate food insecurity, breastfeeding & infant feeding, obesity prevention, and early childhood development inequities.

Dr. Buccini is a recipient of an early career NICHD K99/R00 Pathway to Independence Award, focused on evaluating the scaling up of the '*Criança Feliz*' Early Childhood Development program in Brazil, the largest early childhood development program worldwide. Recently, Dr. Buccini has received an NIH/OD U01 focusing on integrating health and nutrition interventions to reduce disparities among babies and mothers of Color living in historically racial/ethnic marginalized communities in Las Vegas, Nevada. Over the past year, Dr. Buccini has published several manuscripts investigating obesity prevention strategies such as barriers to optimal breastfeeding and infant feeding practices and early childhood development inequities through the application of the WHO Nurturing Care Framework.



Elena Byhoff, MD, MSc

Assistant Professor
University of Massachusetts

Elena Byhoff, MD, MSc, is a Assistant Professor at University of Massachusetts Memorial Health. She is a primary care doctor and health services researcher with an interest in how primary care can be leveraged as a point of entry to address social determinants of health and reduce health disparities. Dr. Byhoff works closely with community organizations to develop and grow connections between health care and social service delivery. Her research includes stakeholder perspectives and implementation considerations for social risk screening, and the consequences of policy incentives on partnerships between health care and social service organizations. She is dedicated to a policy relevant research agenda to improve and expand the provision of primary care to include all aspects of health.

Dr. Byhoff completed her undergraduate degree at the University of California, Berkeley. She received her MD from the University of Pennsylvania and completed her internal medicine training at the Hospital of the University of Pennsylvania in the Primary Care Track. She received her Masters' in Health Services Research while as part of the Robert Wood Johnson Foundation Clinical Scholars Program at the University of Michigan.



Alicia Cohen, MD, MSc

VA Providence Healthcare System

Assistant Professor of Family Medicine
Alpert Medical School of Brown University

Assistant Professor of Health Services, Policy,
and Practice
Brown University School of Public Health

Adjunct Lecturer of Family Medicine
University of Michigan

Alicia Cohen, MD, MSc, FAAFP is a Core Investigator at the VA Providence Healthcare System's Center of Innovation in Long Term Services and Supports, and an Assistant Professor of Family Medicine and Health Services, Policy, & Practice at Brown University. Her research focuses on how best to identify and address food insecurity, and social determinants of health more broadly, in clinical settings. She is currently a VA Career Development Awardee for a multi-stage, mixed methods study to develop and pilot a VA-community partnered intervention optimizing screening and referral processes for connecting Veterans experiencing food insecurity to relevant VA and community resources. She is also Co-PI on a multi-site social risk screening and referral pilot in the VA New England Healthcare System, as well as an RWJF-funded study examining patient interest in and engagement with offered social needs assistance. Dr. Cohen provides primary care at VA Providence Healthcare System's Homeless clinic and Women's Health clinic.

Dr. Cohen received her MD from the Mount Sinai School of Medicine. She completed her Family Medicine training at the Santa Rosa Family Medicine Residency Program followed by an Integrative Medicine Fellowship at the University of Michigan. She was a Robert Wood Johnson Foundation Clinical Scholar at the University of Michigan during which time she earned her master's in Health and Health Care Research. Dr. Cohen subsequently completed an Advanced Health Services Research & Development Fellowship at the VA Ann Arbor Center for Clinical Management Research/VA Providence Center of Innovation in Long Term Services and Supports. She currently serves on the national VA Ensuring Veteran Food Security Workgroup, the national Research Advisory Committee for the Social Interventions Research and Evaluation Network (SIREN), and the Government Affairs & Public Policy Committee for the national non-profit MAZON: A Jewish Response to Hunger.



Jamie M. Faro, PhD

Assistant Professor

Division of Health Informatics and Implementation
Science

Dept. of Population and Quantitative Health Sciences
University of Massachusetts Medical School

Jamie M. Faro, PhD, is an Assistant Professor in the Division of Health Informatics and Implementation Science of the Department of Population and Quantitative Health Sciences at UMass Medical School. Dr. Faro joined PQHS as a T32 NIH-funded postdoctoral fellow in Implementation Science Cancer Prevention and Control in 2018. She then secured institutional K12 NIH-funding from the Massachusetts Consortium for Cardiopulmonary Implementation Science Scholars in September 2020. Both her fellowship and current K12 focus on implementation science research and provided didactic and mentored training in this area. Dr. Faro completed her PhD training at the University of Massachusetts Boston in Exercise and Health Sciences. During this time, she worked on intervention trials including digital weight loss and physical activity promotion, and formative qualitative trials in cancer survivors. Her current research interests involve both patient and provider-facing technology to combat chronic disease prevention and management. She has expertise in designing, implementing, and evaluating physical activity programs, but also connecting patients to existing evidence-based programs. Her current work focuses on using provider technology referrals to connect cancer survivors to physical activity programs of their choice. She has worked with both clinical systems and local community-based programs, including the nationwide YMCA through her work with their LIVESTRONG physical activity program for cancer survivors. Her work draws on behavior change theories to support individuals, while leveraging implementation science frameworks to support sustainability and dissemination. Her goal is to bridge the gap of evidence-based program uptake into routine care through system-level implementation methods.



Paola M. Friedrich, MD, MPH

Assistant Member, St. Jude Faculty
Department of Global Pediatric Medicine

Director, Latin America Region and Metric &
Performance Program, St. Jude Global
St. Jude Children's Research Hospital

Paola Friedrich, MD, MPH, is a pediatric oncologist at St. Jude Children's Research Hospital. She is an Assistant Member in the Department of Global Pediatric Medicine, Director for the Latin America Region and Metric and Performance Program from St. Jude Global, and team lead for St. Jude Global's strategic partnership with the Institute for Healthcare Improvement (IHI). She works clinically in pediatric solid tumors and scholarly in global childhood cancer disparities and health services research.

Dr. Friedrich began her academic journey applying a holistic perspective to global childhood cancer disparities, seeking to understand all layers of influence in ecologic models (from the individual to the context), then narrowed her focus to studying highly prevalent and actionable non-biologic factors and ways to scale up effective interventions to address them. Over time, she developed a special interest in understanding the role that care teams and institutions play on improving childhood cancer outcomes locally and globally, which brought her closer to the quality improvement, improvement science, and implementation and dissemination sciences spectrum. She is currently most interested in building generalizable knowledge on the best application of structural supports during global multi-site quality improvement project implementation.

Dr. Friedrich has shaped the development of Mexico in Alliance with St. Jude (MAS), an intersectoral collaboration with 40-plus institutions focused on improving survival for children with cancer in Mexico, been the faculty lead for the MAS Golden Hour Collaborative, which is improving time to antibiotic therapy for children with cancer in over 80 institutions in Mexico, Central and South America. She has also led the development of PrOFiLE, the St. Jude Global Packages, and the Lancet Oncology Commission Country Step and Facility Levels of Care Framework.

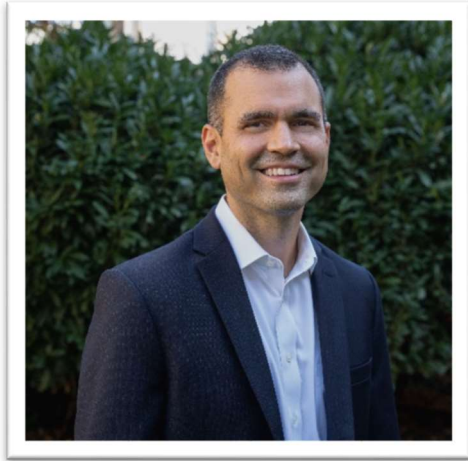


Jaclynn Hawkins, PhD, MSW

Associate Professor
School of Social Work
University of Michigan

Associate Director
Curtis Health Equity Center
University of Michigan

Jaclynn Hawkins, PhD, MSW, is an Associate Professor in the School of Social Work at the University of Michigan (UM), and Associate Director of the Curtis Health Equity Center at UM. Her research program focuses on identifying the causes of physical health disparities between Black men and non-Hispanic white men; and creating and evaluating diabetes health interventions with an emphasis on addressing the unique needs of Black men. She completed my PhD training at the UM School of Social Work and was supported by a National Institutes of Health Research Supplement to Promote Diversity in Health-Related Research. Much of her work focuses on the intersection of race, age and gender in diabetes diagnosis and self-management in Black men has extensive experience conducting research on disparities in health care experiences and outcomes specifically for Black men. She has authored several peer-reviewed research articles focused on Black men's T2D self-management health behaviors, chronic disease communication, and psychosocial and physical wellbeing. Dr. Hawkins is principal investigator of the Michigan Men's Diabetes Project (MenD), a pilot/feasibility randomized control study of a peer led diabetes self-management and support intervention targeting Black men with T2D (PI: Hawkins; 1-R21-DK11733901-A1). She was also co-investigator on a 33-month, mixed methods cluster randomized controlled trial in 21 African American churches that aims to assess the sustainability of improvements observed following education services vis-à-vis three parallel approaches to self-management support (R01DK104733-02). Dr. Hawkins is Co-Director of the Michigan Center for Diabetes Translational Research Pilot/Feasibility Program.



Manuel Jimenez, MD, MS, FAAP

Associate Professor of Pediatrics & Family Medicine
and Community Health
Rutgers Robert Wood Johnson Medical School

Director of Developmental and Behavioral Pediatrics
Education, Boggs Center of Developmental Disabilities
Rutgers Robert Wood Johnson Medical School

Attending Developmental and Behavioral Pediatrician
Children's Specialized Hospital

Manny Jimenez, MD, MS, FAAP, is an Associate Professor of Pediatrics & Family Medicine and Community Health, Director of Developmental and Behavioral Pediatrics Education at the Boggs Center on Developmental Disabilities at Rutgers Robert Wood Johnson Medical School, and an Attending Developmental and Behavioral Pediatrician at Children's Specialized Hospital. His work focuses on promoting optimal developmental outcomes for children from under-resourced communities and making the health system more responsive to their needs. Dr. Jimenez uses quantitative, qualitative, and community-based participatory research methods to ask policy-relevant research questions as well as propose and test sustainable solutions to real-world problems impacting children and their families. He has been the principal investigator (PI) or MPI on projects supported by NIH, AHRQ, the Robert Wood Johnson Foundation, and other private foundations. He partners with key stakeholders including parents, community leaders, health professionals, and policymakers in all stages of this work.

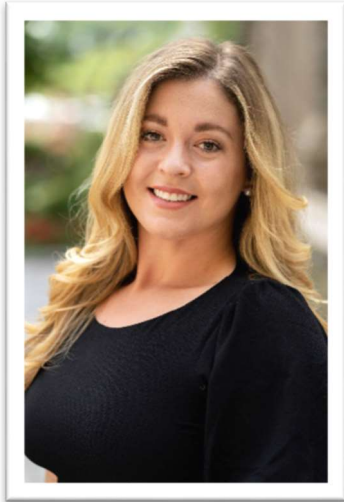


Allison Lewinski, PhD, MPH, RN

Assistant Professor
Duke University School of Nursing

Investigator
Durham VA Health Care System

Allison Lewinski, PhD, MPH, RN, is a health services researcher with a focus on improving health outcomes for individuals with chronic illness. Dr. Lewinski is an Assistant Professor at the Duke University School of Nursing (DUSON), and Investigator at the Center of Innovation to Accelerate Discovery and Practice Transformation (ADAPT) at the Durham VA. Her work sits at the intersection of precision medicine and population health, as her program of research aims to better understand how, why, when, and for what populations and settings, virtual care interventions are effective. To do this, she uses mixed and multiple methods to understand how individuals engage with healthcare teams, how to support behavior change in diverse populations and with varying disease states, and how to foster stronger engagement with the healthcare system. Dr. Lewinski is in her first year of a Nursing Research Initiative, a career development award for nurse scientists, funded by VA HSR&D. This overall aim of this award is to examine the association of diabetes distress and related factors in order to develop an intervention to improve self-management in Veterans with type 2 diabetes. In addition to her research activities, Dr. Lewinski is co-director of the Improving Access through Virtual Care Focused Area of Research at ADAPT, a core investigator in ADAPT's Qualitative Core, and a member of the Research Racial Justice Task Force at DUSON. Overall, Dr. Lewinski aims to develop meaningful interventions that are relevant, appropriate, and can be implemented in real-world clinical settings.



Gabriella M. McLoughlin, PhD, MS

Assistant Professor
Department of Kinesiology
College of Public Health
Temple University

Gabriella (Gabby McLoughlin, PhD, MS, is an assistant professor in the Department of Kinesiology in the College of Public Health at Temple University. She received a master's and doctoral degree in kinesiology from the University of Illinois at Urbana-Champaign (2012-2018), before working at Iowa State University as a postdoctoral research associate (2018-2020), leading projects on childhood obesity prevention and school wellness programming. Dr. McLoughlin received in-depth training in implementation science in chronic disease prevention as a research associate at Washington University in St. Louis. Current applications of implementation science reflect a variety of topics pertaining to health disparities in cancer prevention, addressing food insecurity in underserved communities, school health policy implementation, and community approaches to obesity prevention more broadly. Dr. McLoughlin is deeply committed to improving implementation of evidence-based policies and programs that address health equity through pragmatic approaches.



Andrea Mendoza-Vasconez, PhD

Assistant Professor of Behavioral and Social Sciences
(Research)
Brown University School of Public Health

Andrea S. Mendoza-Vasconez, PhD, is an Assistant Professor of Behavioral and Social Sciences (Research) at Brown University School of Public Health. She received her PhD in Public Health (Health Behavior) from the UC San Diego/San Diego State University Joint Doctoral Program in Public Health and completed her postdoctoral training at the Stanford Prevention Research Center. Her research has primarily focused on the promotion and maintenance of physical activity, particularly among Latino populations, using both quantitative and qualitative research methods. More recently, she has delved into dissemination and implementation research and is currently leading a study to adapt a physical activity intervention for Latina women to be implemented at Federally Qualified Health Centers in the US-Mexico border. Dr. Mendoza-Vasconez is also interested in policy dissemination research, the promotion of behaviors that can impact both health and environmental sustainability, particularly behaviors related to policy advocacy, and in the use of technology to disseminate and tailor interventions.



Stephanie Orstad, PhD

Research Assistant Professor
General Internal Medicine and Clinical Innovation
New York University Grossman School of Medicine

Stephanie Orstad, PhD, is an early-career scientist specializing in physical activity assessment and promotion in the context of adult obesity research. Dr. Orstad is a research assistant professor of General Internal Medicine and Clinical Innovation at the New York University Grossman School of Medicine. Her research interests center on multilevel factors that facilitate or constrain health behaviors as they relate to cardiometabolic disease, and impact population health and health disparities. She also focuses on effective implementation of evidence-based interventions to reduce cardiometabolic risk. She draws upon a broad methodological skillset in her research, including the use of geographic information systems and electronic health record data, survey research, device-based behavioral assessment, qualitative interviewing, mixed methods, and implementation science. Her current research examines multilevel implementation factors influencing patient adherence to physical activity and weight management. Dr. Orstad works with colleagues in the federally qualified health centers, New York City Health and Hospitals, and the Veterans Health Administration on behavioral intervention trials that translate research into clinical practice to improve weight management and quality of life outcomes in patients. Her current epidemiologic research largely focuses on natural and built environmental determinants of physical activity and chronic disease outcomes such as weight loss maintenance and type 2 diabetes control. Dr. Orstad's career goal is to provide an evidence base of rigorous measurement and evaluation of ecologically informed physical activity interventions to reduce cardiometabolic disease risk factors, and work with high-risk populations to translate effective strategies into primary care and community health settings.



Elizabeth Salerno, PhD, MPH

Assistant Professor
Division of Public Health Sciences
Department of Surgery
Washington University School of Medicine in St.
Louis

Elizabeth (Liz) Salerno, PhD, MPH, is an Assistant Professor in the Division of Public Health Sciences, Department of Surgery at Washington University School of Medicine in St. Louis. Liz earned her Ph.D. in kinesiology with an emphasis in exercise psychology from the University of Illinois at Urbana-Champaign in 2017. She then completed a Cancer Prevention Fellowship at the National Cancer Institute (NCI) within the Metabolic Epidemiology Branch in the Division of Cancer Epidemiology & Genetics, which afforded her the opportunity to earn an MPH from the Johns Hopkins Bloomberg School of Public Health with a concentration in biostatistical and epidemiological methods for public health and clinical research. She is classically trained in health behavior change and has extensive experience designing and implementing randomized controlled exercise trials and studying epidemiological associations between physical activity behaviors and health outcomes. Broadly, Liz's research agenda examines the determinants and outcomes of physical activity behavior at the intersection of cancer and aging, specifically as it pertains to cognitive, psychological, and physical function. She has published over 45 articles in peer-reviewed journals and has two active grants supporting her research with childhood cancer and breast cancer survivors. A large focus of Liz's research includes the design and implementation of community-based physical activity interventions after cancer, disentangling the complexities of accelerated aging during cancer survivorship, and advocating for the inclusion of lifestyle behaviors into the standard of cancer care.



Jeremy I. Schwartz, MD

Associate Professor of Medicine Yale School of Medicine and School of Public Health

Associate Professor of Chronic Disease Epidemiology Yale School of Public Health

Jeremy Schwartz, MD, is an Associate Professor of Medicine at Yale School of Medicine and Chronic Disease Epidemiology at Yale School of Public Health. He is a board-certified Internist and Pediatrician. He practices inpatient Medicine at Yale New Haven Hospital where he serves as a Firm Chief, overseeing clinical, educational, and quality improvement activities on a 32-bed unit that is the inpatient home of the Yale Primary Care residency program. Globally, Dr. Schwartz's work centers around health service delivery for non-communicable diseases (NCDs) in East Africa, specifically Uganda, where he began working in 2004 as a Fogarty/Ellison Global Health Scholar, and returned as a medical resident, chief resident, and junior faculty member. Throughout that time, he developed a scholarly interest in global non-communicable diseases (NCDs), growing out of his frontline clinical work. He is co-founder and co-Director of the Uganda Initiative for Integrated Management of NCDs, a research, training, and advocacy consortium based in Kampala. He is an NIH-funded Principal Investigator and, along with his Ugandan and US collaborators, oversees a broad research portfolio on integrated care delivery with focus areas that include access to essential medicines; clinical integration of HIV and hypertension; self-care for diabetes and hypertension; and mobile health technology for self-care in heart failure. He has mentored numerous pre- and post-doctoral trainees from the US, Canada, and Uganda. Dr. Schwartz is Lead of Faculty Network Development for the Yale Institute for Global Health and is a founding member and Lead of the Yale Network for Global Non-Communicable Diseases.



Michelle I. Silver, PhD, ScM

Assistant Professor
Department of Surgery
Division of Public Health Sciences
Washington University in St. Louis School of Medicine

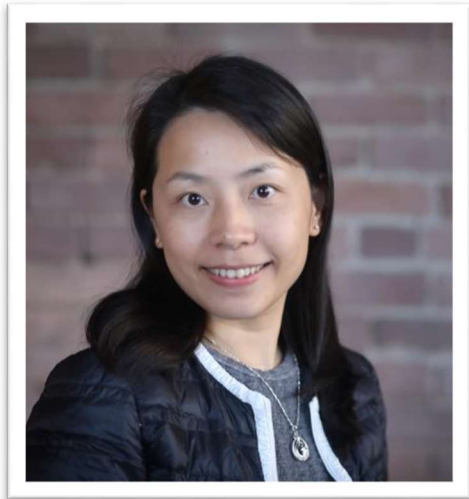
Michelle Silver, PhD, ScM, received her ScM and PhD in Epidemiology from Johns Hopkins and did her postdoctoral research as a Cancer Prevention Fellow at the National Cancer Institute. She is currently an Assistant Professor in the Division of Public Health Sciences at Washington University School of Medicine. Her research centers around understanding and improving the delivery of evidence-based practices in cancer prevention, with a primary focus on human papillomavirus (HPV) infection and cervical cancer as well as other screen-detectable cancers. Dr. Silver's research aims to understand the factors that prevent delivery of effective screening and integration of prevention tools into routine practice in a way that would enable equitable cancer prevention across diverse populations, working to ensure that they don't worsen pre-existing disparities. Her research examines patient-, provider-, and system-level factors that influence the effective translation of evidence-based practices, particularly cancer screening, into routine clinical care. Dr. Silver has studied patient preferences for cervical cancer screening test types and frequencies as well as guideline concordant screening in both breast and cervical cancer. She hopes to use what she learns in IS-2 to extend her research beyond describing how screening guidelines are or are not being implemented, to develop studies to improve implementation. She currently has funded studies exploring HPV vaccine hesitancy, increasing lung cancer screening, and cervical cancer screening and cessation of screening in older adults.



Brittany L. Smalls, PhD, MHSA

Associate Professor
Division of Research
Dept. of Family Medicine and Community Medicine
University of Kentucky

Brittany L. Smalls, PhD, MHSA, is an Associate Professor in the Division of Research within the Department of Family and Community Medicine (DFCM) at the University of Kentucky. Before her faculty appointment to DFCM, she was an Assistant Professor in the Center for Health Services Research and Internal Medicine at the University of Kentucky. Dr. Smalls' research interests include health disparities, global health, and social determinants of health within the confines of complex chronic illnesses. Her work has included the assessment of social determinants of health on type 2 diabetes health outcomes, specifically community and neighborhood characteristics. Currently, Dr. Smalls is focusing her research on the burden of complex chronic illness in older adults living in rural areas, the impact of social determinants, and the development of patient-centered and community-based interventions to mitigate identified social environmental burdens to chronic disease self-management. At present, she serves as co-investigator on two NIH R01 grants and is in the third year of her NIDDK K01 Career Development Award.



Yanfang Su, ScD

Acting Assistant Professor of Global Health
University of Washington

Yanfang Su, ScD, is a health economist with more than ten years of work experience in health systems and policy. Dr. Su holds an ScD in Global Health and Population within Health Systems track from Harvard University. During her postdoctoral training at the University of Washington, Dr. Su applied econometric methods to health financing and published papers in *The Lancet* as co-first author and *The Lancet Infectious Diseases* as first author. Her publications focus on three areas: 1) economic evaluation of healthcare systems, including analysis of equity, supply, demand, costs, and quality; 2) public policy evaluation; and 3) global health and population measures. Dr. Su is the founder and Board Chair of a non-profit organization, the East West Alliance for Education and Health, which delivered equitable community services and conducted digital health randomized controlled trials in low-resource settings. Dr. Su worked at Tsinghua University and the Hong Kong Policy and Research Institute in China. Dr. Su has consulted for the World Bank, Bill & Melinda Gates Foundation, and Results for Development on primary health care systems strengthening. Dr. Su is a guest editor for a special issue on policy implementation science in *Frontiers in Health Services*. Her career goal is to become a leading scientist in policy implementation, with a focus on cardiovascular disease prevention.



Katy Trinkley, PharmD, PhD

Associate Professor
Department of Clinical Pharmacy
University of Colorado

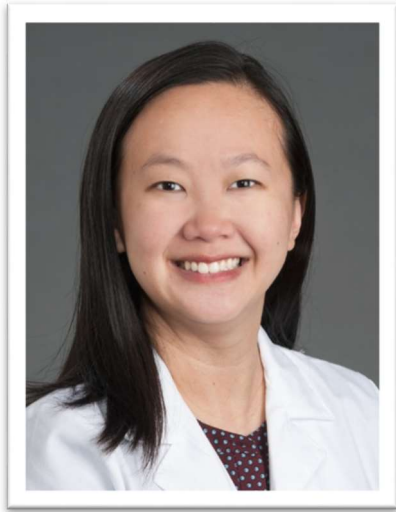
Katy Trinkley, PharmD, PhD, is an Associate Professor at the University of Colorado. She graduated with her Doctor of Pharmacy from Purdue University and PhD in health information technology from the University of Colorado. She completed residency and a research fellowship at the Ohio State University and was a NHLBI K12 Implementation Science Scholar at the University of Colorado. She is a primary care clinical pharmacist and clinical informaticist at UCHHealth. Dr. Trinkley's research focus is on advancing the visionary goals of learning health systems and leveraging data and implementation science to create innovative health information technologies to optimize safe and effective medication use. Much of her research focuses on clinical decision support tools within the electronic health record to optimize therapies for chronic cardiovascular disease.



Randi M. Williams, PhD, MPH

Assistant Professor
Cancer Prevention and Control Program
Lombardi Comprehensive Cancer Center

Randi M. Williams, PhD, MPH, is an Assistant Professor in the Cancer Prevention and Control Program in the Lombardi Comprehensive Cancer Center. Her research is focused on clinic-based multilevel interventions to reduce disparities in lung cancer screening. In her K99, Dr. Williams will gain new experiences and skills in developing and integrating multilevel interventions that target the provider/system level and the patient level in order to achieve equity in rates of physician-patient communication about lung cancer screening and screening behavior. This builds on her dissertation research that described aspects of decision-making including knowledge and awareness about lung cancer screening using low dose computed tomography, values related to screening, and decision-making preferences among African Americans at high risk for developing lung cancer. Dr. Williams received her PhD in behavioral and community health from the University of Maryland, College Park, School of Public Health. Dr. Williams obtained her Master's of public health in behavioral sciences and health education from Emory University, Rollins School of Public Health. Prior to attending Emory, she received a Bachelor of Arts degree in psychology from Syracuse University.



Mia Yang, MD, MS

Associate Professor
Director of Wake Forest House Call Program
Wake Forest Alzheimer's Disease Research Center
Section on Gerontology & Geriatric Medicine, Internal
Medicine
Wake Forest Baptist Health Medical Center

Mia Yang, MD, MS, is a geriatrician-researcher interested in improving the care of persons living with dementia and support family caregivers. Like many geriatricians, she has a wide range of interests: clinically spanning from home care medicine to inpatient care of elderly; research spanning from pragmatic clinical trials to deprescribing/de-implementation. She is a non-hierarchical leader and enjoys thinking about the big picture, especially system re-design. She is the Director of Wake Forest House Call Program, where home-based medical care allows medically and socially-complex older adults to age in place, within the dignity of their own homes. She is an active investigator within the Wake Forest Alzheimer's Disease Research Center (ADRC), the only ADRC in the southeast. She is leading Wake Forest site in Dementia Care (D-CARE) pragmatic comparative effectiveness trial, jointly funded by NIH and PCORI. She trains medical students, residents, and geriatric fellows in homes, clinic, and the bedside. She recently published as a co-author in a coffee-table book called *Warrior Women Project: A Sisterhood of Immigrant Women* (available everywhere books are sold). She enjoys staying present with her two young children under the age of 5 and her palliative-care physician husband.